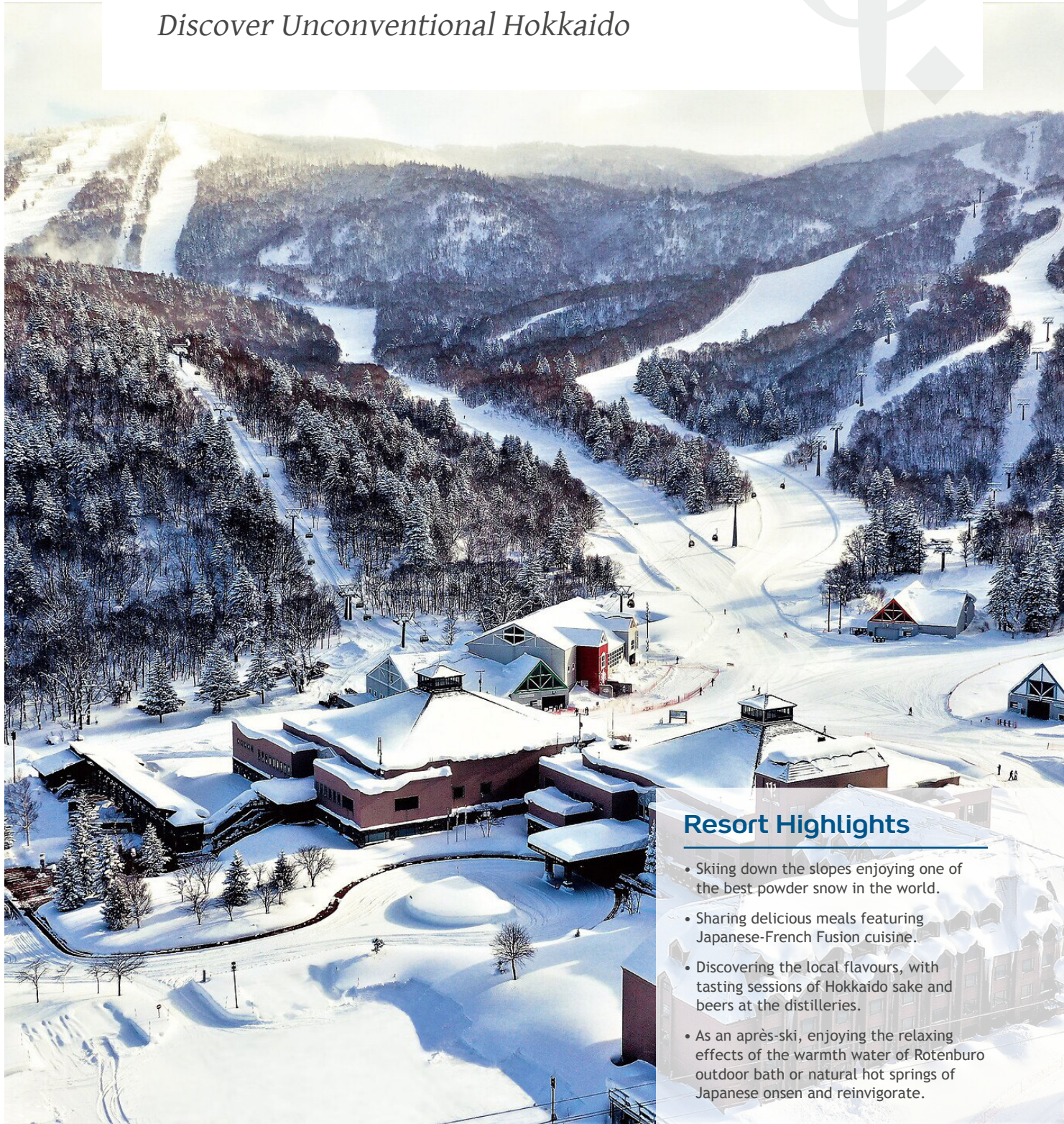




# Kiroro Peak

4Ψ Japan

*Discover Unconventional Hokkaido*



## Resort Highlights

- Skiing down the slopes enjoying one of the best powder snow in the world.
- Sharing delicious meals featuring Japanese-French Fusion cuisine.
- Discovering the local flavours, with tasting sessions of Hokkaido sake and beers at the distilleries.
- As an après-ski, enjoying the relaxing effects of the warmth water of Rotenburo outdoor bath or natural hot springs of Japanese onsen and reinvigorate.





# Kiroro Peak



## CLUB MED KIRORO PEAK

Akaigawa 650 Tokiwa Paklok, Yoichi-gun, Hokkaido  
Japan



Safe Together. Club Med has implemented new hygiene and safety measures to offer you peace of mind and a most joyful experience.

## Summary



Ski area map



Sports & Activities



Swimming Pools



Restaurants & Bars



Accommodation



Wellness & Excursions



Practical Information



# Ski area map

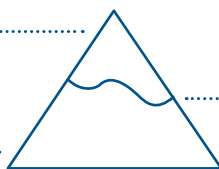
## KIRORO PEAK

1180m

Maximum altitude

520m

Minimum altitude



517m

Ski-in / Ski-out resort



Alpine ski slopes

NUMBER OF SKI SLOPES

9

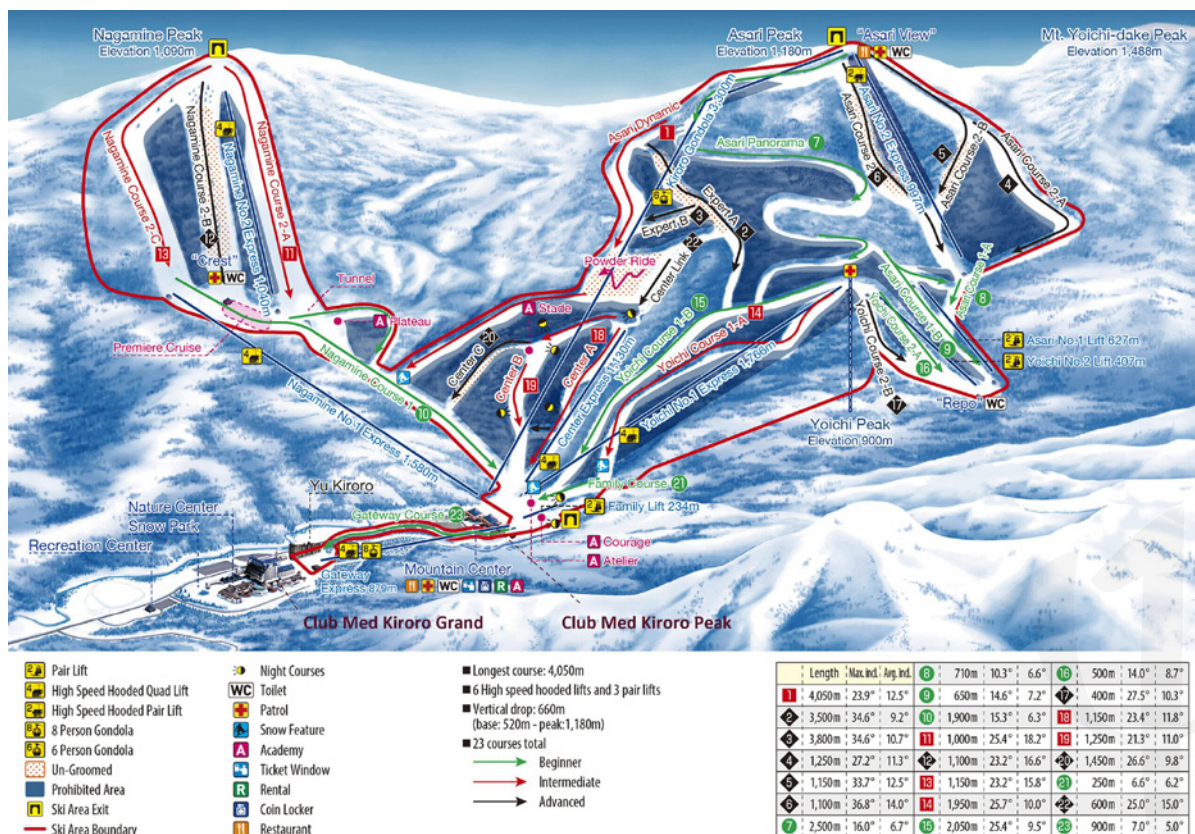
6

8



11

Freeride Zone(s)







# Sports & Activities



## Winter Sports

	Group Lessons	Free Access	At extra cost course	Min. age (years)	Dates of Availability
Alpine ski	All levels			12 years old	Always
Snowboarding	All levels / Lessons for all levels (Japanese / English)			12 years old	Always

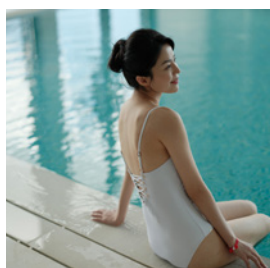
## Land Sports & Leisure

	Group Lessons	Free Access	At extra cost course	Min. age (years)	Dates of Availability
Hiking	Free access / All levels			12 years old	Always
Swimming Pool		✓			Always
Yoga	Group lessons for all levels			12 years old	Always
Cardio-Training	Free access			18 years old	Always
Entertainment		✓			Always

\*on demand  
\*\*Depending on weather conditions



# Swimming Pools



## INDOOR SWIMMING POOL

Indoor Pool

Heated

Depth (min/max): 0.9m / 1.3m

Located in Kiroro Grand Resort, the pool is the perfect place to swim and clock up a few lengths with various zones:

- Adult Pool Area & Kids Pool

Area

- Aqua Fitness Classes (for 16 years and above)

Also available:

Jacuzzi - Free access for all

Sauna at the pool - 1 mixed room for both genders, free access for all

Opening hours: 2 pm - 6 pm (subjected to change)





# Restaurants & Bars



## Bars

### THE VIEW BAR - MAIN BAR

Main bar

## Restaurants

### Otaru - Main restaurant

Main Restaurant

The Main Restaurant offers an all-day buffet selection with a variety of international cuisines, served in a stylish, natural and fun environment spread across 2 themed zones Western and Asian.

### The Ogon - Asian Specialty (Kiroro Grand Resort)

Speciality Restaurant

Specialising in a savoury mix of Chinese and Thai cuisine, spoil yourself as you go on a gastronomical adventure around Asia at our Asian Specialty restaurant. Featuring fresh Otaru seafood and Hokkaido meat and vegetables, get ready for the mouth watering flavours to excite your tastebuds.

Kiroro Grand easily accessible via:

- 3 mins shuttle bus
- 3 min gondola (during hours of operation)

\*Operation date and timing are subjected to changes in resort, please check with resort team on site.

### The Kaen\* - Yakiniku Specialty (Kiroro Grand Resort)

Speciality Restaurant

Indulge in a sumptuous grilled feast, with our must try Kuroge Wagyu Cross Karubi - a well marbled thin sliced beef that is succulent, or our Boneless Short Rib, both from our renowned Tokachi farm in Hokkaido. Paired with fresh Hokkaido vegetables and local rice, it'll be a hearty meal to remember.

\*The Kaen is currently open, but will be at additional cost during the dates below. Information may be subject to changes.

- Summer 2023: 16 Jun - 9 Oct 2023
- Winter 2024: Dec 2023 - May 2024

Kiroro Grand easily accessible via:

- 3 mins shuttle bus
- 3 min gondola (during hours of operation)

Please note that operation date and timing are subjected to changes in resort, please check with resort team on site.

### The Ebisu - Sushi Specialty (Kiroro Grand Resort)

Speciality Restaurant

Gather with friends at our Sushi Specialty Restaurant for a casual dine-in experience after a day out from skiing. Enjoy a balanced yet sumptuous meal paired with your favourite local drinks to end off a perfect day.

Kiroro Grand easily accessible via:

- 3 mins shuttle bus
- 3 mins gondola (during hours of operation)

\*The Ebisu will only open for Winter 2024 from Dec 2023 - May 2024, and will be at extra cost. Information may be subject to changes.



# Accommodation



Superior



Deluxe

Category	Name	Min. m <sup>2</sup>	Highlights	Capacity	Bathroom	Equipment and services
Superior	Junior Family Superior Room - Tatami	39		1 - 3	Bathtub, Shower, Bathrobe, Slippers, Hair Dryer, Amenities (shampoo, shower gel, body lotion)	Concierge service, Laundry service (extra charge), Luggage service, Cleaning on demand, Transfer for G.M® with transfer package
	Superior Room	28		1 - 2	Bathtub, Shower, Bathrobe, Slippers, Hair Dryer, Amenities (shampoo, shower gel, body lotion)	
	Junior Family Superior Room	38		1 - 3	Bathtub, Shower, Bathrobe, Slippers, Hair Dryer, Amenities (shampoo, shower gel, body lotion)	
	Superior Room - Mobility Accessible	39		1 - 2	Bathtub, Shower, Bathrobe, Slippers, Hair Dryer, Amenities (shampoo, shower gel, body lotion)	Concierge service, Laundry service (extra charge), Luggage service, Cleaning on demand, Transfer for G.M® with transfer package
Deluxe	Junior Family Deluxe Room	57		1 - 3	Bathtub, Hair Dryer, Amenities (shampoo, shower gel, body lotion), Shower, Bathrobe, Slippers	Concierge service, Laundry service (extra charge), Luggage service, Cleaning on demand, Transfer for G.M® with transfer package, Minibar (non-alcoholic drinks) - refilled upon request
	Family Deluxe Room	60		1 - 4	Bathtub, Shower, Bathrobe, Slippers, Hair Dryer, Amenities (shampoo, shower gel, body lotion)	
Suite	Junior Family Suite	77		1 - 5	Bathtub, Shower, Separate toilets, Bathrobe, Slippers, Hair Dryer, Spa brand amenities (shampoo, shower gel, body lotion), Amenities (shampoo, shower gel, body lotion)	Inclusive of room service for continental breakfast, Priority booking at Club Med Spa, Concierge service, Laundry service (extra charge), Luggage service, Cleaning on demand, Transfer for G.M® with transfer package, Room service (at extra cost) from 11 a.m to 11 p.m, Priority booking at the Speciality Restaurant, Minibar (non-alcoholic drinks) - refilled daily

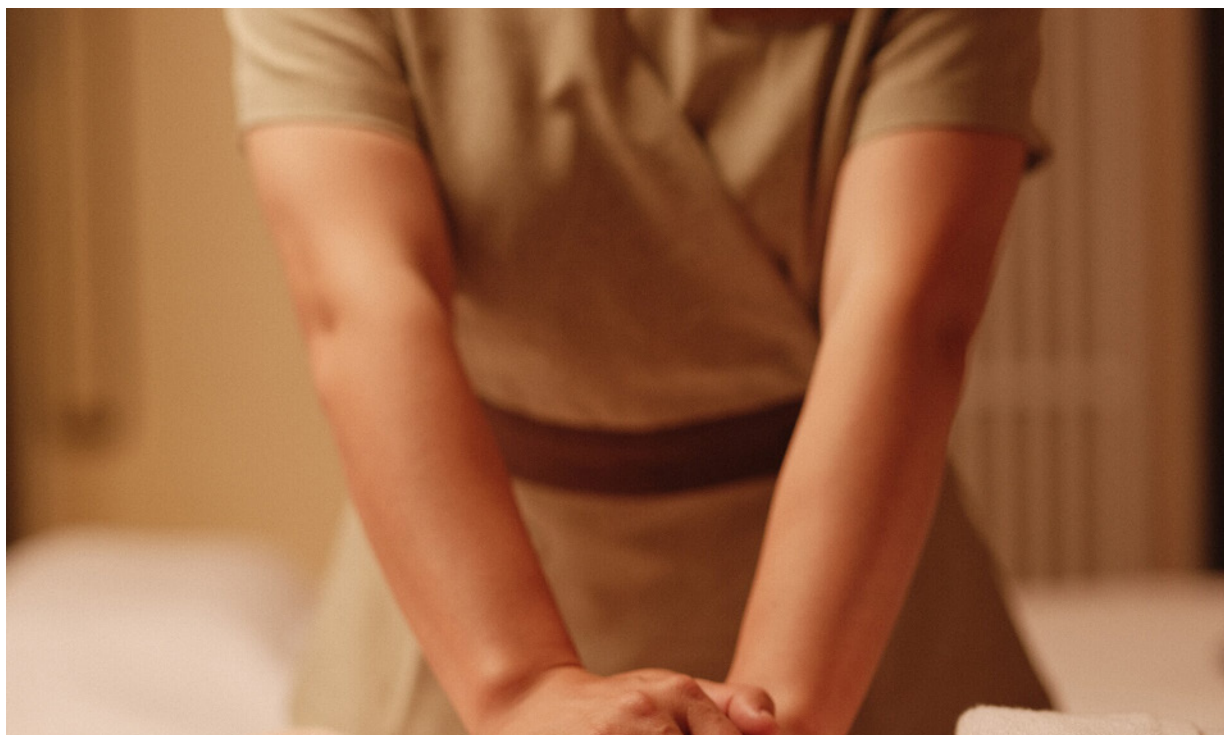
Category	Name	Min. m <sup>2</sup>	Highlights	Capacity	Bathroom	Equipment and services
	Family Suite	96		1 - 5	Shower, Separate toilets, Bathrobe, Slippers, Hair Dryer, Amenities (shampoo, shower gel, body lotion), Bathtub, Spa brand amenities (shampoo, shower gel, body lotion)	Inclusive of room service for continental breakfast, Priority booking at Club Med Spa, Concierge service, Laundry service (extra charge), Luggage service, Cleaning on demand, Transfer for G.M® with transfer package, Room service (at extra cost) from 11 a.m to 11 p.m, Priority booking at the Speciality Restaurant, Minibar (non-alcoholic drinks) - refilled upon request







# Wellness & Excursions



## Club Med Spa

Entrust your body and mind to the savoir-faire of our thérapepists who will be entirely dedicated to you. They offer you a genuine relaxation experience, combining gentleness and expertise. Your senses will be gently awakened to the fragrances of our high-quality creams, selected specially for you.





# Practical Information



## CLUB MED KIRORO PEAK

Min. age (years) 12

## Information

### CHECK-IN/CHECK-OUT

Times of arrival/departure from the Resort:

For all stays, arrival between 3pm and 8pm. G.M@s who arrive early may be able to have lunch at extra cost, subject to availability.

Rooms available during the afternoon.

Rooms to be vacated by 10am on day of departure, for departure from the Resort at 5pm (breakfast and lunch included).

Should any of these times change, the revised times will be given in your "Holiday Rendez-Vous".

### TRANSFERS

Chitose airport (90 mins.)

