



# Ski Area Map

ski domain map



1030m

Maximum altitude

400m

Ski-in / Ski-out Resort

420m

Minimum altitude



Alpine ski slopes

Number of ski slopes



7

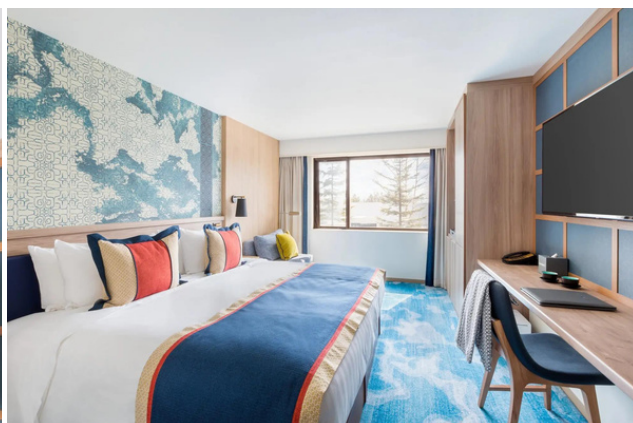
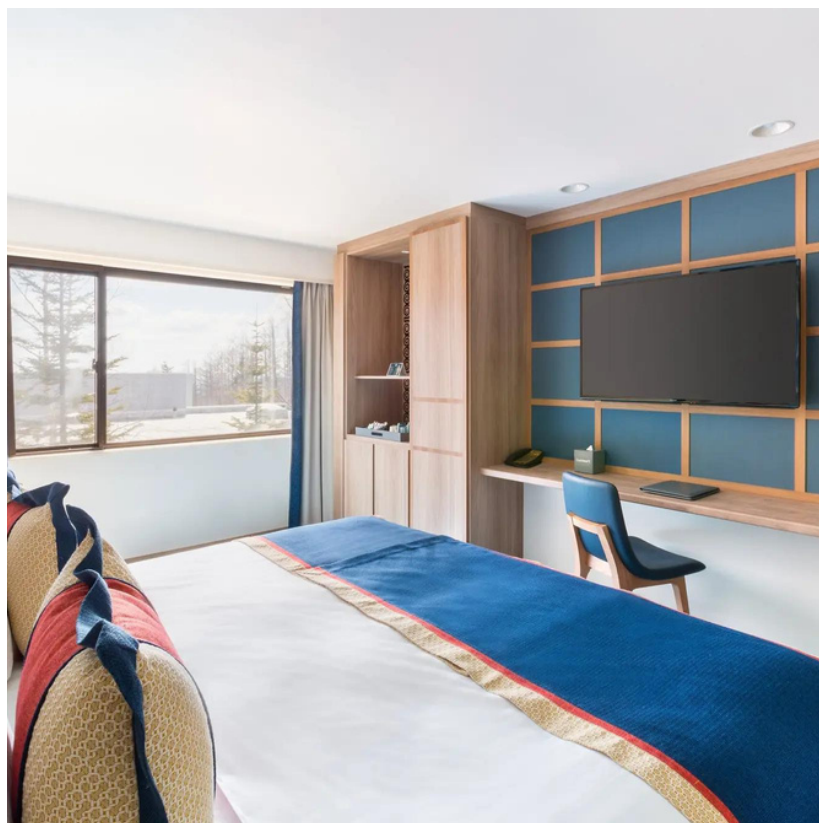






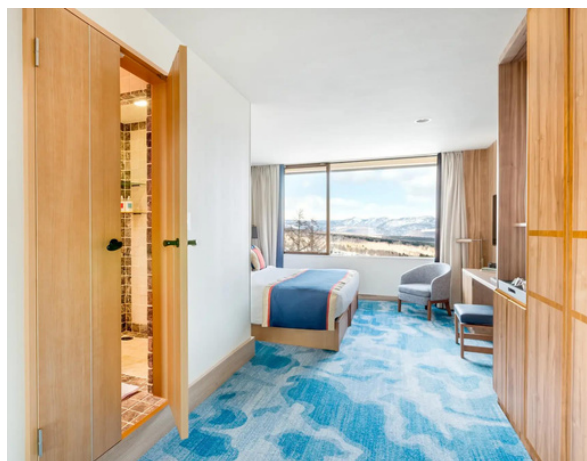
## Junior Family Superior Room

(Roomsize 27 m<sup>2</sup>  
| 3 Adults)



## Deluxe Room

(Roomsize 29 m<sup>2</sup> | 2 Adults)



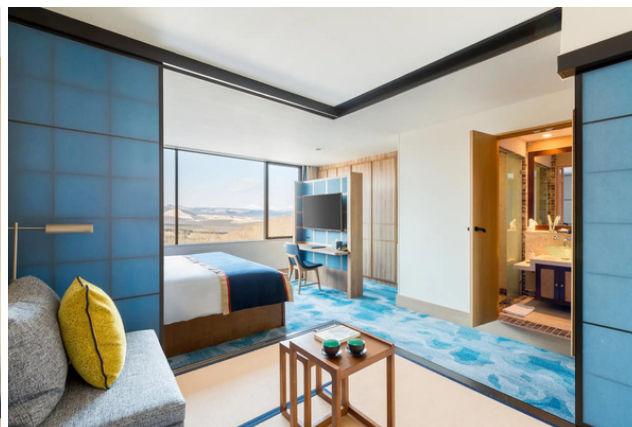




## Family Deluxe Room

: Tatami Lounge

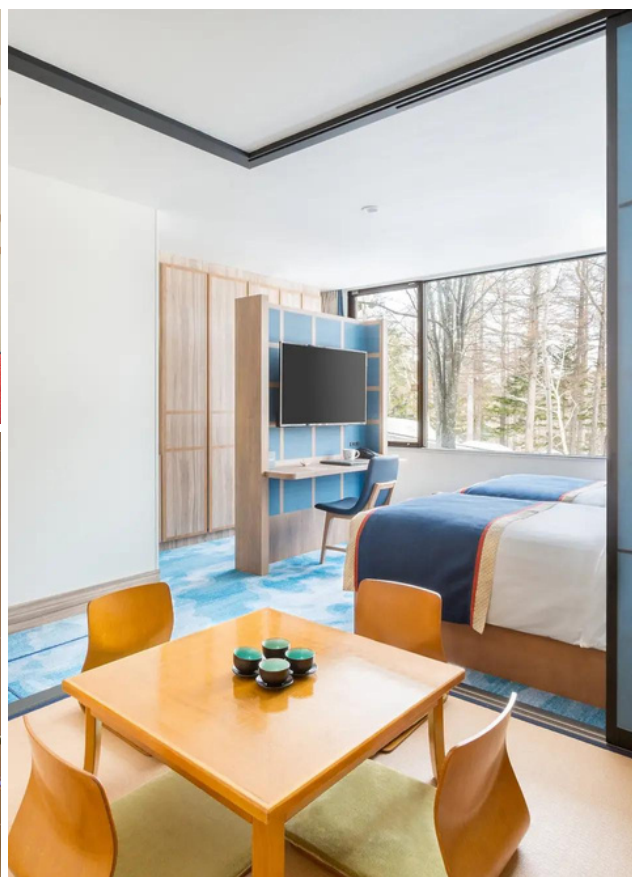
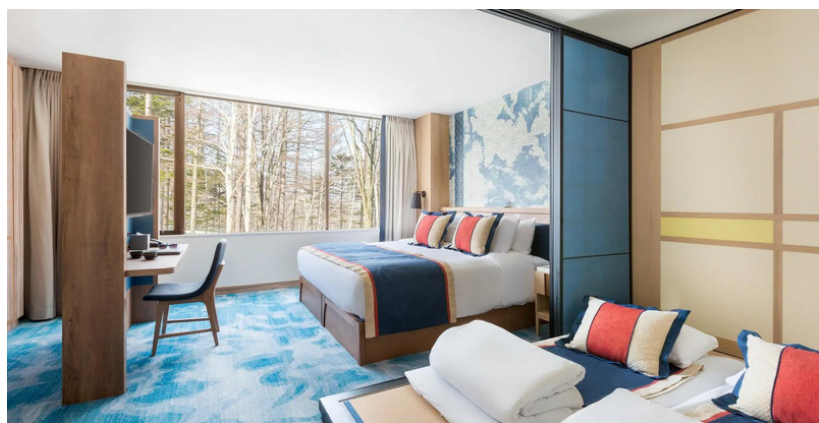
(Roomsize 37 m<sup>2</sup> | 4 Adults)



## Master Family Deluxe Room

: Tatami Beds

(Roomsize 60 – 67 m<sup>2</sup>  
| 3 Adults)

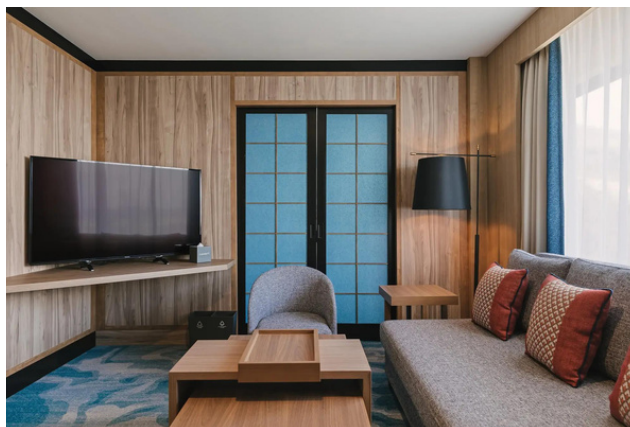
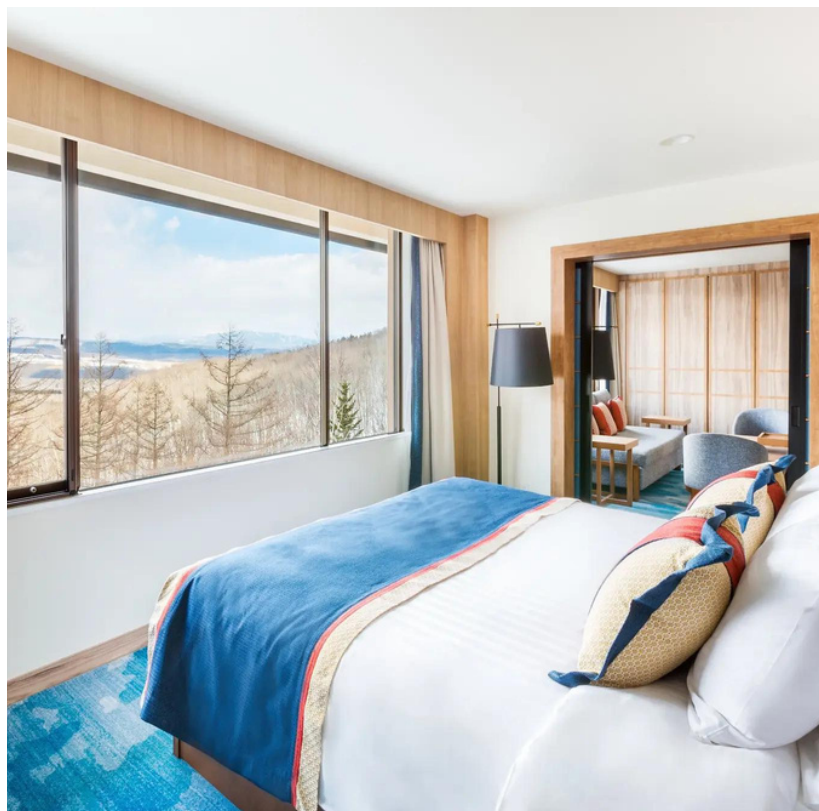






## Suite – Mountain View

(Roomsize 74 m² | 5 Adults)



## Swimming Pool Area







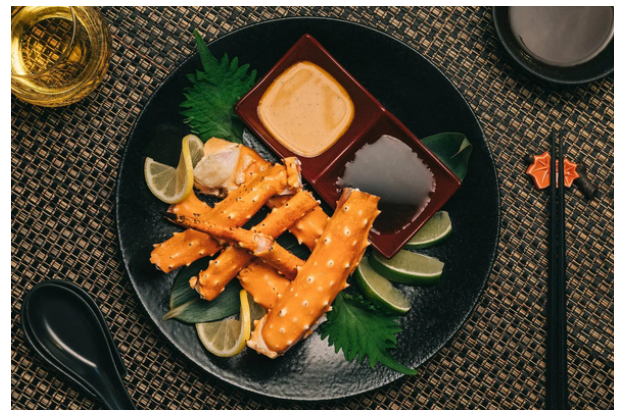
## Restaurant

### The Daichi

Main restaurant

Open all day long

This recently expanded restaurant takes its inspiration from mountain views and the forms and shapes of origami, representing longevity and good luck. Wrapped in glass with nature in every direction, dining here is an immersive Hokkaido winter experience.



### Mina Mina

Your family will love this must-try dining experience. Our Mina Mina specialty restaurant prepares a traditional nabemono, or nabe, soup served in a heated pot right at the table.

**\*\* ตัวเลือกบางรายการมีค่าธรรมเนียมเพิ่มเติม  
(ต้องจองล่วงหน้า 1 วัน)**

**วันและเวลาเปิดให้บริการอาจมีการเปลี่ยนแปลงในรีสอร์ท  
โปรดตรวจสอบกับทีมงานรีสอร์ทในสถานที่**





# Bar

## The Wakka

### Main Bar

Wakka bar is for winding down. Take in in wintry mountain views through expansive bay windows while enjoying a bite to eat and a drink at our cosy bar.

- Wine
- Beer
- Cocktail
- Mocktail
- Juice
- Coffee
- Soft Drink
- Milkshake
- Tea

Open all day







# Gallery

