



Ski Area Map



- Pair Lift
- High Speed Hooded Quad Lift
- High Speed Hooded Pair Lift
- 8 Person Gondola
- 6 Person Gondola
- Un-Groomed
- Prohibited Area
- Ski Area Exit
- Ski Area Boundary

- Night Courses
- Toilet
- Patrol
- Snow Feature
- Academy
- Ticket Window
- Rental
- Coin Locker
- Restaurant

- Longest course: 4,050m
- 6 High speed hooded lifts and 3 pair lifts
- Vertical drop: 660m (base: 520m - peak: 1,180m)
- 23 courses total
- Beginner
- Intermediate
- Advanced

	Length	Max. wd.	Avg. incl.	1	2	3	4	5	6	7	8	9	10	11	12	13	14	15	16	17	18	19	20	21	22	23
1	4,050m	23.9"	12.5°	770m	10.3°	6.6°	500m	14.0°	8.7°																	
2	3,500m	34.6"	9.2°	650m	14.6°	7.2°	400m	27.5°	10.3°																	
3	3,800m	34.6"	10.7°	1,900m	15.3°	6.3°	1,150m	23.4°	11.8°																	
4	1,250m	27.2°	11.3°	1,000m	25.4°	18.2°	1,250m	21.3°	11.0°																	
5	1,150m	33.7°	12.5°	1,100m	23.2°	16.6°	1,450m	26.6°	9.8°																	
6	1,800m	36.8°	14.0°	1,150m	23.2°	15.8°	250m	6.6°	6.2°																	
7	2,500m	16.0°	6.7°	1,950m	25.7°	10.0°	600m	25.0°	15.0°																	
8				2,050m	25.4°	9.5°	900m	7.0°	5.0°																	

1180m
Maximum altitude

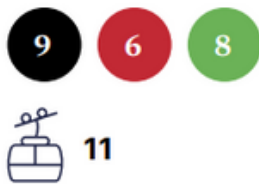
517m
Ski-in / Ski-out resort

520m
Minimum altitude



Alpine ski slopes

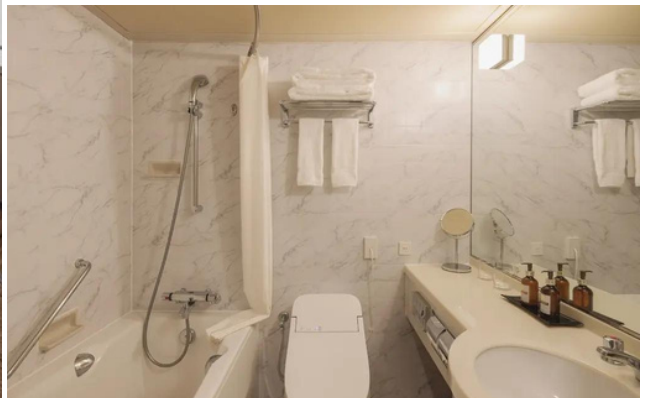
Number of ski slopes





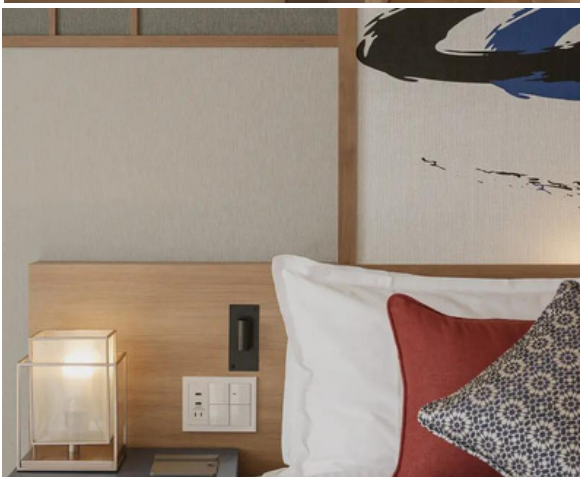
Superior Room

(Roomsize 28 – 31 m² | 2 Adults)



Junior Family Superior Room

(Roomsize 38 – 39 m²
| 3 Adults)

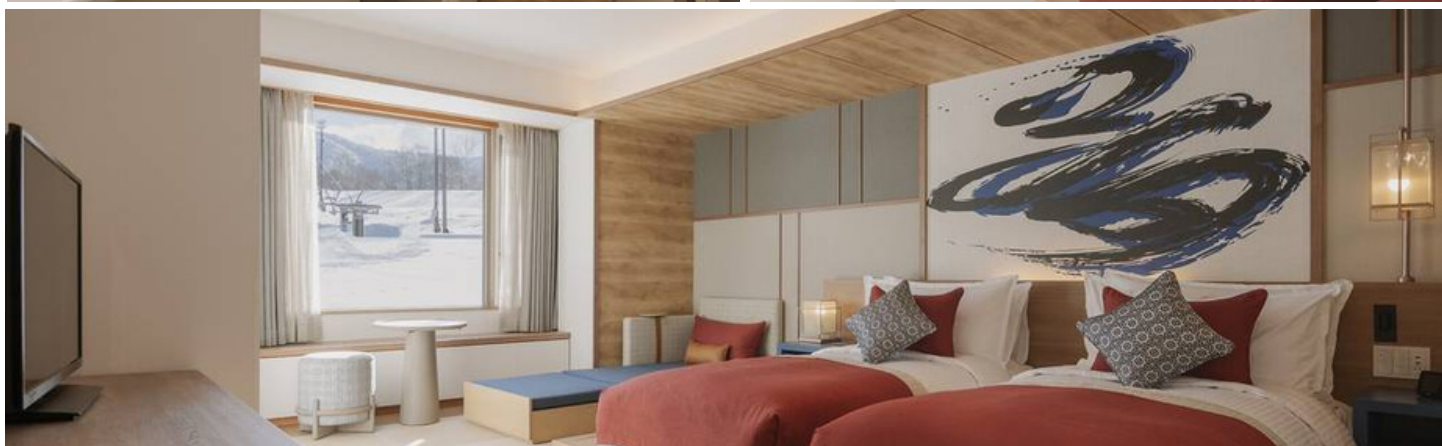




Junior Family Superior Room

(Roomsize 39 m² | 3 Adults)

: Tatami



Junior Family Deluxe Room

(Roomsize 57 – 69 m²
| 3 Adults)





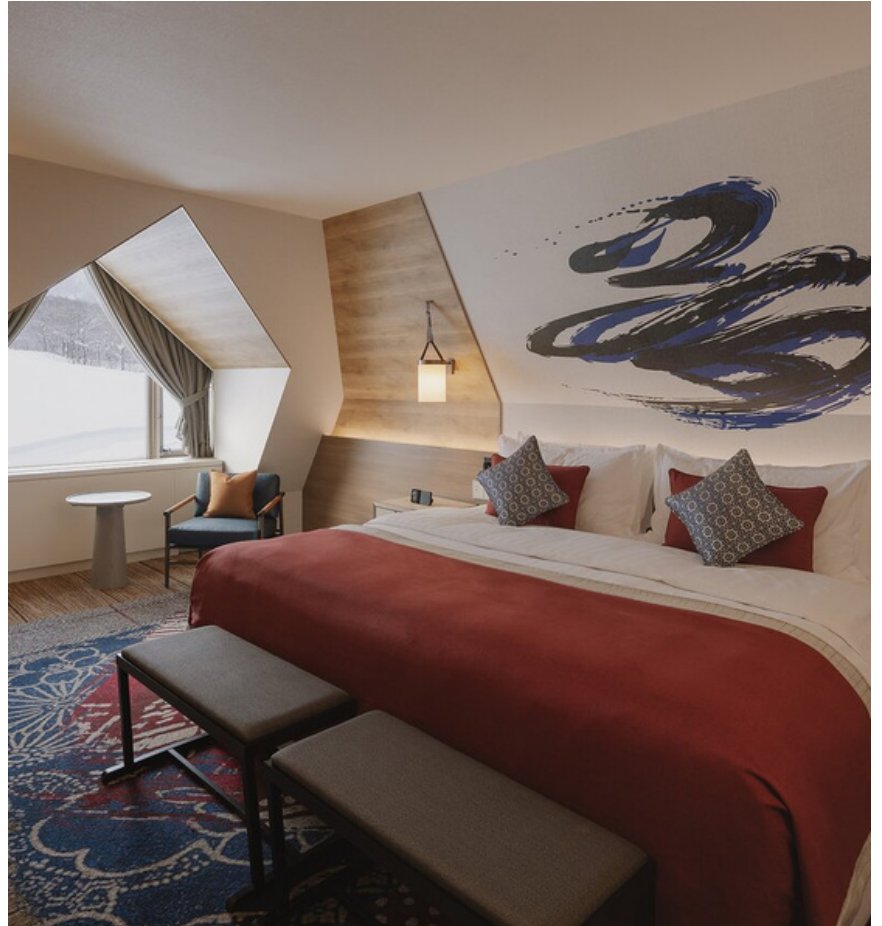
Family Deluxe Room

(Roomsize 60 m² | 4 Adults)



Junior Family Suite

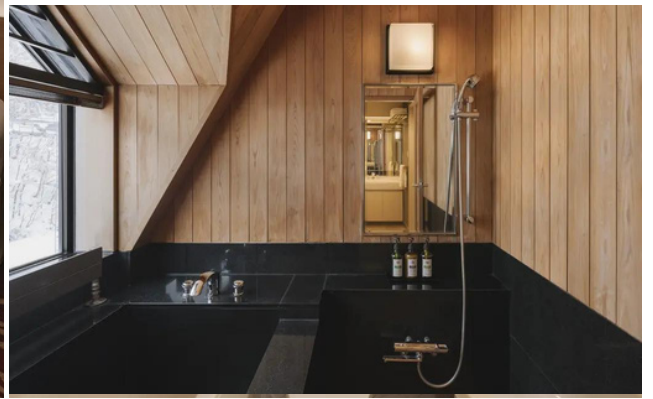
(Roomsize 38 – 39 m²
| 3 Adults)





Family Suite

(Roomsize 60 m² | 4 Adults)



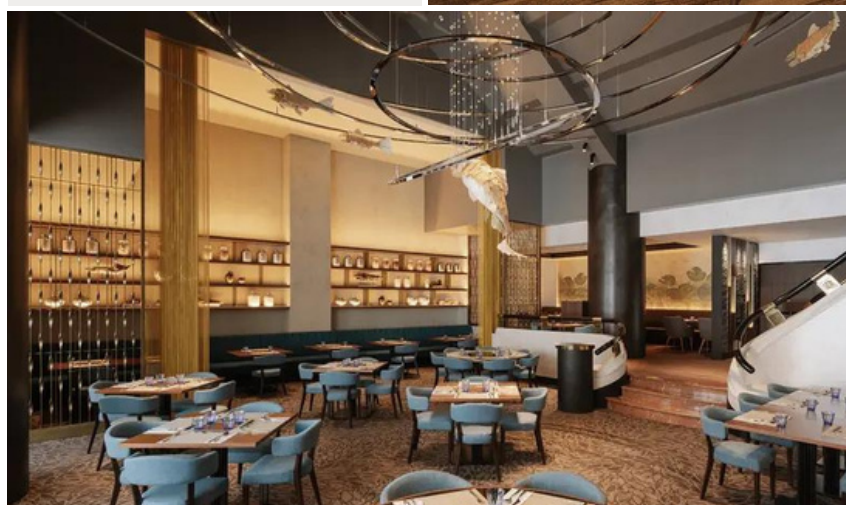


Restaurant

Otaru

Main restaurant

Open all day long



The Ogon

(Asian Specialty)

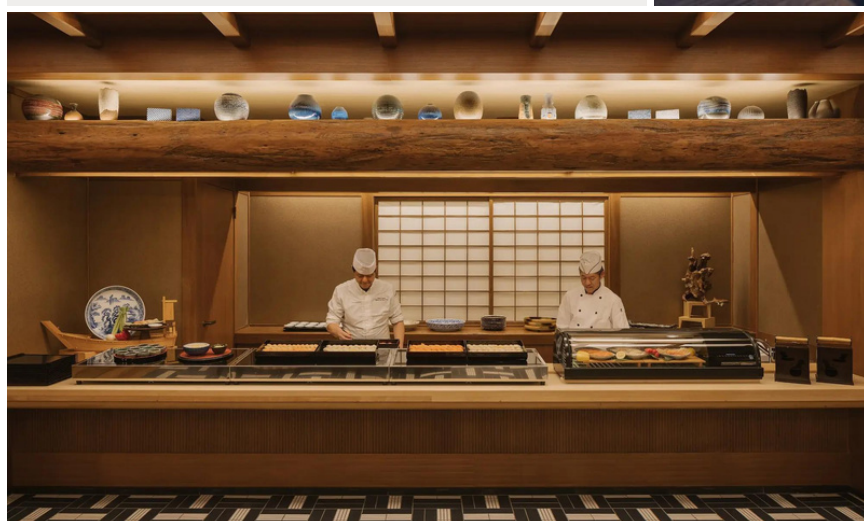
**** Operation date and timing are subjected to changes in resort, please check with resort team on site.**

The Kaen*

Yakiniku Specialty

* The Kaen is currently open, but will be at additional cost during the dates below. Information may be subject to changes.

• Winter 2024: Dec 2023 – May 2024



The Ebisu

Sushi Specialty

* The Ebisu will only open for Winter 2024 from Dec 2023 – May 2024, and will be at extra cost. Information may be subject to changes.



Bar

The View Bar

Main Bar

Cheer into the night at the Main Bar, a modern and fun space for entertainment and stage performances with a variety of local and international drinks to enjoy.

- Wine
- Beer
- Cocktail
- Mocktail
- Juice
- Coffee
- Soft Drink
- Milkshake
- Tea



