



# Ski Area Map



3330m

Maximum altitude

1850m

Ski-in / Ski-out Resort

1100m

Minimum altitude



250  
km

Alpine ski slopes

Number of ski slopes

16

40

34

43



81

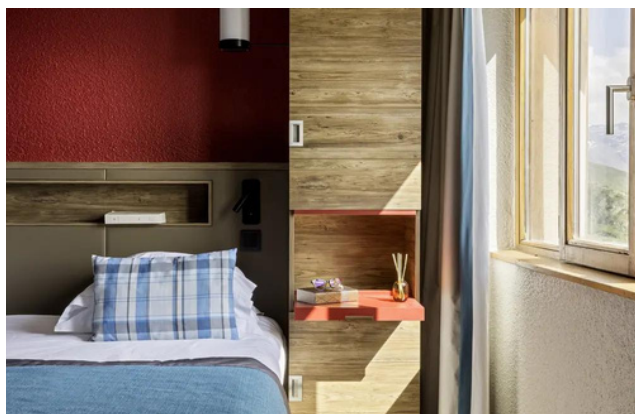
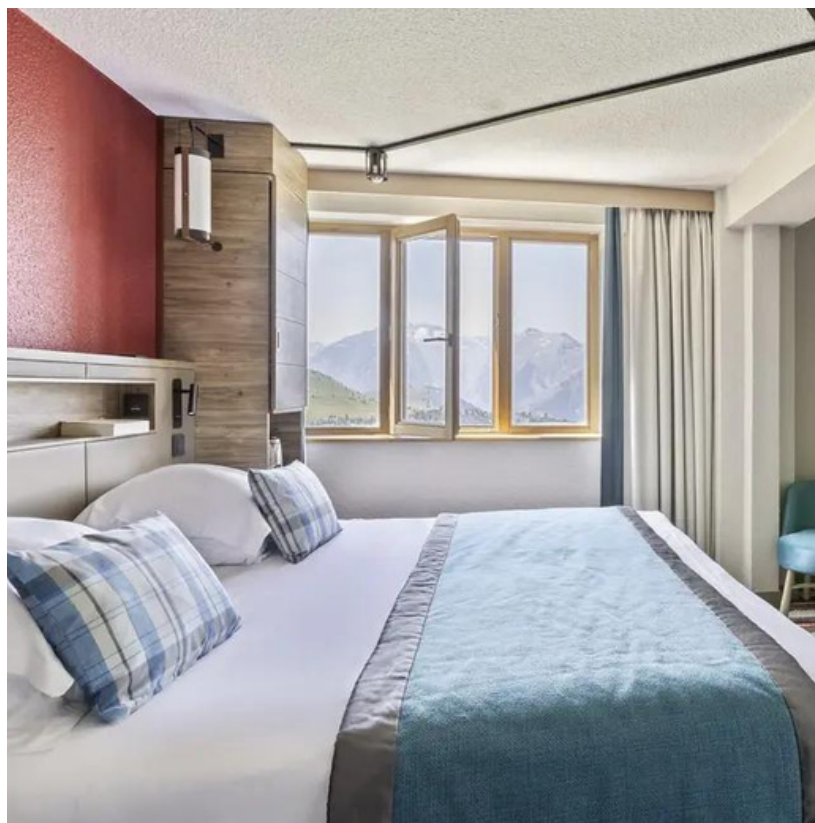






## Superior Room

(Roomsize 23 – 28 m<sup>2</sup> | 2 Adults)



## Junior Family Superior Room

(Roomsize 28 – 38 m<sup>2</sup>  
| 3 Adults)

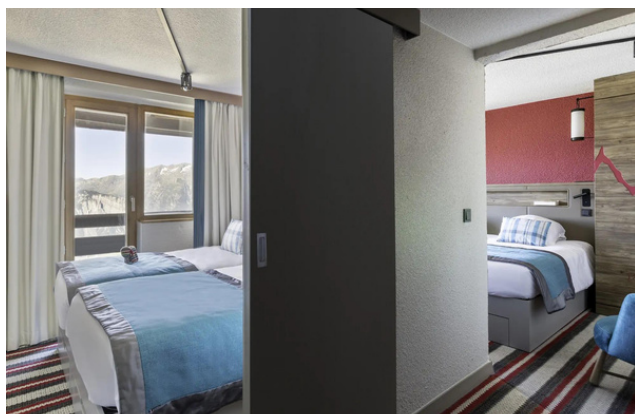
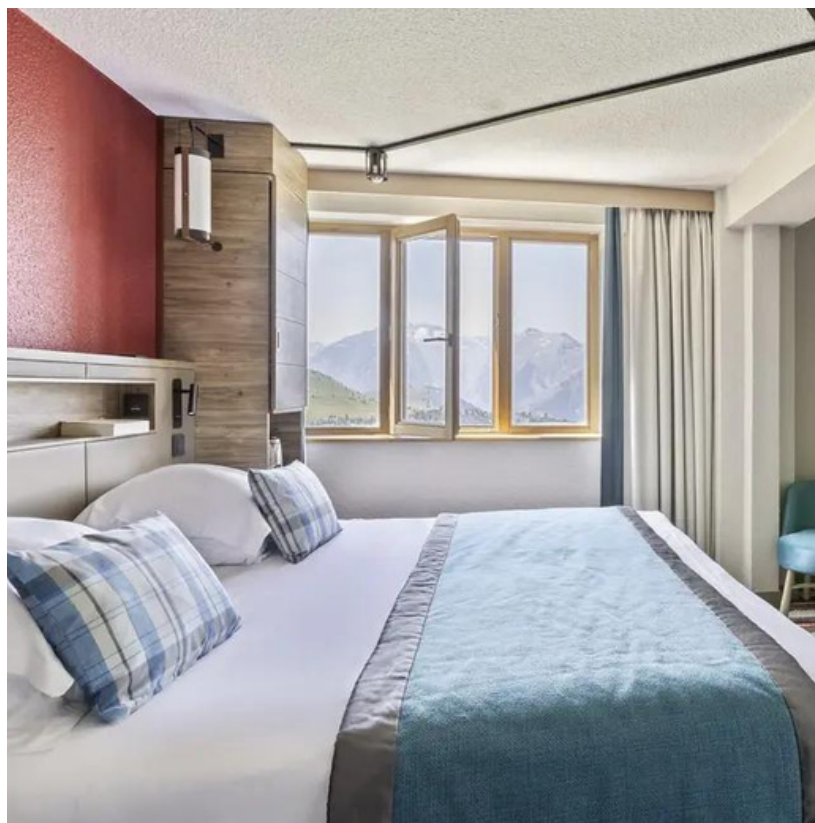






## Family Superior Room

(Roomsize 28 – 38 m<sup>2</sup> | 4 Adults)



## Interconnecting Junior Family Superior Rooms

(Roomsize 56 – 76 m<sup>2</sup>  
| 6 Adults)







## Restaurant

### Le Pic Blanc

Main restaurant

Open all day long

Panoramic views of the slopes and the valley from this restaurant with terrace that welcomes you with your family for all your meals.



### Les Alpagnes Gourmet Lounge

The space adapts to provide the perfect eating experience for every time of day, from breakfast beginning at 7.30 am, to chic picnic at lunchtime, to tasty, comforting afternoon tea, or a discovery dinner.

**\*\* Summer 2024: temporary closure**





# Bars

## Le Névé

### Main Bar

The main bar is the perfect place to recharge your batteries during a dynamic day on the slopes. Catch up with family and friends over midday snacks and drinks on the terrace, with stunning views over the valley.

- Wine
- Beer
- Cocktail
- Mocktail
- Juice
- Coffee
- Soft Drink
- Milkshake
- Tea





## Gallery

