

Resort Map



PATINA
MALDIVES • FARI ISLANDS



- RESORT FACILITIES**
- A Arrival Jetty
 - B Portico
 - C Flow
 - D Reboot
 - E Yoga Pavilion
 - F Footprints
 - G Organic Garden
 - H Camp Fire
 - I Tennis
 - J Fari Marina Village
 - K Amarta by James Turrell
 - L Water Sports Centre
 - M Fari Boutiques
 - N Go Go Burger
 - O Farine
 - P Brasa
 - Q Koën
 - R Arabesque
 - S Tuk Tuk Gelato & Tum Tum
 - T Fari Beach Club & Pool
 - U Art gallery
 - V Helios
 - W Roots
 - X Wok Society
 - Y Veli Bar & Pool
 - Z Bird Island
- ACCOMODATION**
- 1 BR Beach Pool Villa
 - 1 BR Sunset Beach Pool Villa
 - 1 BR Water Pool Villa
 - 1 BR Sunset Water Pool Villa
 - 1 BR Beach Pool Villa
 - 2 BR Sunset Beach Pool Villa
 - 2 BR Water Pool Villa
 - 2 BR Sunset Water Pool Villa
 - 3 BR Beach House with private pool
 - Fari Studios



ONE BEDROOM BEACH POOL VILLA



ONE BEDROOM WATER POOL VILLA





TWO BEDROOM WATER POOL VILLA



FARI STUDIOS





Restaurant & Bars



ROOTSE

Modern Plant-Based

Opening Hours :
Open for dinner



FARI BEACH CLUB

International

Opening Hours :

Bar :

12.00 PM – 12.00 AM

Lunch :

12.00 PM – 05.00 PM

Dinner :

07.00 PM – 10.30 PM



FARINE

Italian Semi – Buffet

Opening Hours :
On request

TUK TUK GELATO

Gelateria | Sorbets | Ice Creams

Opening Hours :

All day Snacks 12.00 PM – 5.00 PM

(Open: Monday to Sunday)





Restaurant & Bars



GO GO BURGERS

World Class Burgers

Opening Hours :

All day Snacks

12.00 PM – 5.00 PM

(Closed: Mondays & Thursdays)

HELIOS

Aegean / Greek Cuisine

Opening Hours :

Dinner

06.00 PM – 10.30 PM



WOK SOCIETY

Asian | Dim Sum

Opening Hours :

Dinner

07.00 PM – 10.30 PM

BRASA

Patagonian Steak House

Opening Hours :

Dinner : **07.00 PM – 10.30 PM**

(Dates might change according to schedule)





Restaurant & Bars



KÖEN

Modern Japanese
& Nordic

Opening Hours :

Open for dinner

(dates might change
according to schedule)

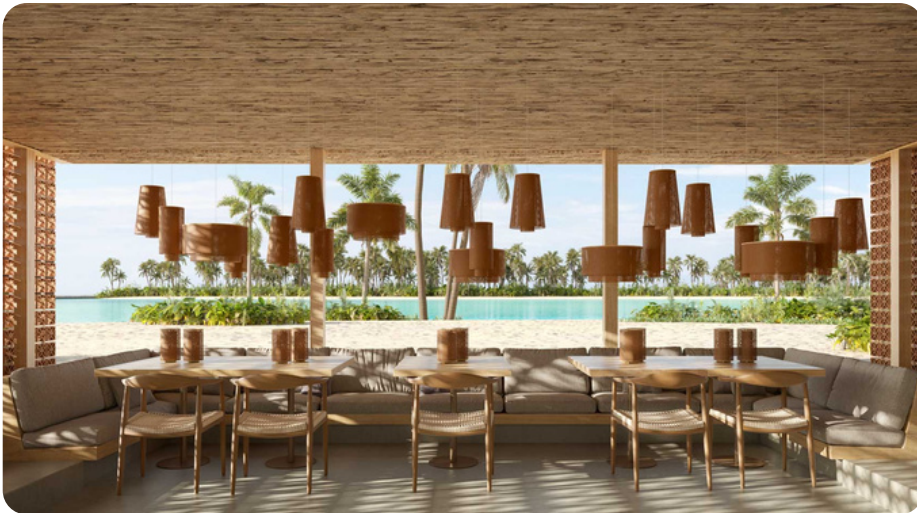
TUM TUM

Asia

Opening Hours :

12.00 PM – 05.00 PM

(Closed on Wednesday)



ARABESQUE

Lebanese & North Indian
Cuisine

Opening Hours :

Daily from

11.00 AM until 10.30 PM

VELI BAR

International

Opening Hours :

11.00 AM – 07.00 PM



HALF BOARD MEAL PLAN



- Daily Breakfast at Portico.
- Dinner can be availed in following dining venues: Wok Society and Portico (all-day-dining).
- Half Board is applicable for a 3-course meal from the a la carte menus. Premium items in the menus are of additional charge. Should there be a buffet dinner at Portico and Wok Society, no additional cost will be added.
- Dine around credit of USD123 net (= US\$ 100++) per adult per night for a la carte at Helios, Brasa, Koen, Fari Beach Club, Roots and Farine.
- Half Board can be availed during dinner and includes food only. Beverages are chargeable as per consumption.
- Half Board is not applicable towards In-Villa Dining, Destination Dining.

Complimentary Patina Maldives, Fari Islands :

- Complimentary ice cream as per the resort's selection at Tuk Tuk Gelato, daily from 12 p.m. – 5 p.m.
- One complimentary introduction to scuba diving per child, per stay.
- Return dhoni transfers within Fari Islands, as per the resort's schedule.
- One bottle of Champagne or a non-alcoholic option per stay.
- A large selection of low and high impact group exercise classes offered from the resort's weekly schedule of activities.
- Privileged access to the Patina Maldives, Fari Islands Lifestyle App with complimentary music and smart booking options for services at the resort.
- Complimentary use of bikes, snorkeling set, stand-up paddle board and kayaks.
- Complimentary access to The Fari Beach Club and Footprints (kids club) as well as the facilities at the adjacent Fari Islands luxury resorts.
- 24-hour access to Reboot (gymnasium) and the two swimming pools.
- 24-hour Essentialist's service.
- In-villa daily seasonal fruit and infused spring water.
- Exclusive range of organic bathroom amenities and a bathing ritual menu.
- Unique personalized turn down amenity.
- A Nespresso machine and a tea station.
- High speed Wi-Fi throughout the resort.

